

6/26 Grandlee Drive Wendouree

# FOR SALE



**Address** 6/26 Grandlee Drive  
Wendouree VIC 3355  
(The Grande Business Park)

**Description** This brand new office warehouse offers a prestigious profile with a modern office interior.

- Including office and amenities
- Extra mezzanine office space available
- Carpet
- Air conditioning
- Ample parking

**Area** Total: 479m<sup>2</sup>

**Parking** 6 Cars

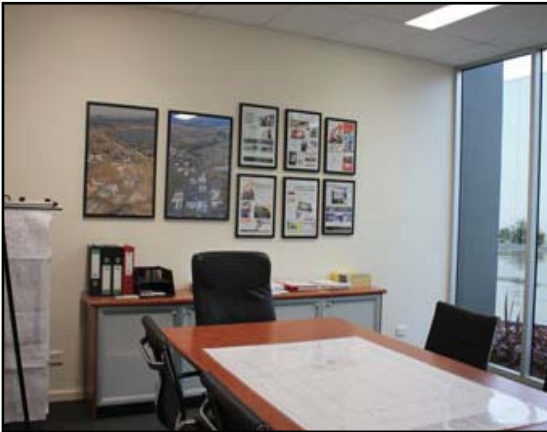
**Contract Type** For Sale

**Sale** \$550,000 + GST (AUD)

**Inspection** By Appointment

**Phone** Frank Marchese: 0418 555 684  
David Ryan: 0411 229 262

**Email** dryan@citywideconstruction.com.au



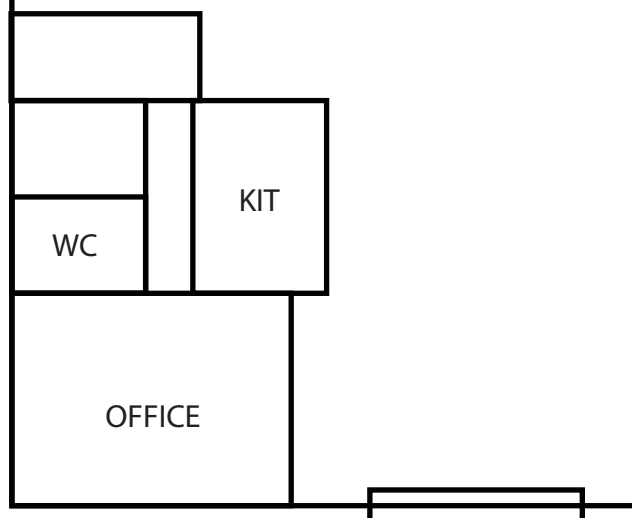
**CITYWIDE**  
**CONSTRUCTION** PTY LTD

6/26 Grandlee Drive Wendouree

**FOR SALE**

**Warehouse 6**  
26 Grandlee Drive  
Wendouree

**479 sqm**



**CITYWIDE**  
**CONSTRUCTION** PTY LTD